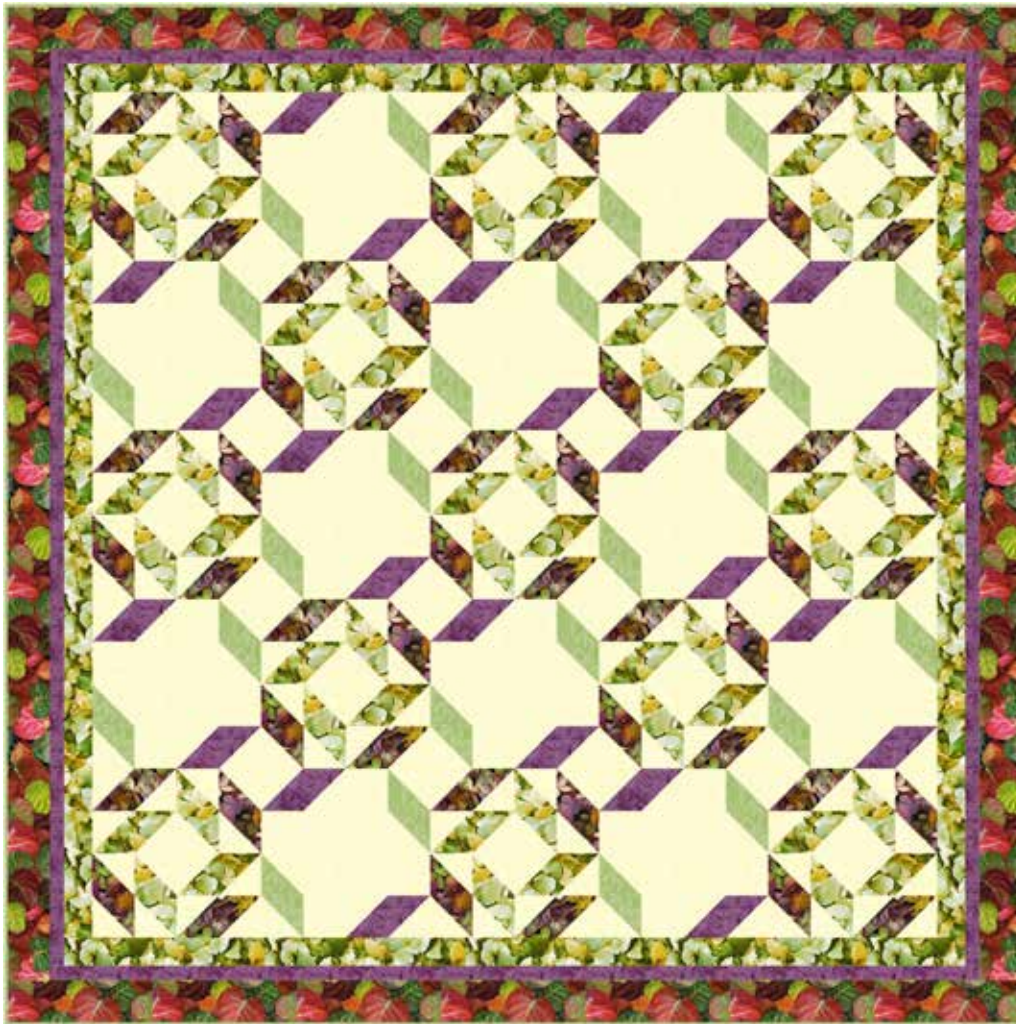


A NEW LEAF

Finished Quilt: 72" x 72"

Quilt design by Carolyn Beam, featuring Leave Me Be, a Hoffman Spectrum Digital Print collection and Hand-dyed Watercolors.

Whether you like your blocks small and accurate, or big and easy, this one's for you. With various sized blocks, and colors, you can make these as big or little as you wish.



Q4449 594-September

Q4450 71-Lime

Q4464 246-Amazon

1895 46-Plum

1895 500-Gardenia

1895 539-Paisley

FABRICS	1 KIT
Q4449 594-September	1 Yard
Q4450 71-Lime	1 1/2 Yards
Q4464 246-Amazon	7/8 Yard
1895 46-Plum	1 Yard
1895 500-Gardenia	3 1/2 Yards
1895 539-Paisley	1 1/4 Yards*

* includes binding

FREE PATTERN DOWNLOAD

HoffmanFabrics.com

A New Leaf (25 Block)

Fabric Requirements:

Q4450 71-Lime: 1 1/2 yards for blocks and border #1

Q4449 594-September: 1 yard for blocks

Q4464 246-Amazon: 7/8 yard for border #3

1895 500-Gardenia: 3 1/2 yards for blocks

1895 46-Plum: 1 yard for blocks and border #2

1895-539-Paisley: 1 ¼ yards for blocks and binding

Cutting:

Q4450 Lime:

Cut nine 3 ½" x WOF strips

Sub-cut 52 rectangles 3 ½" x 6 ½" (A)

Cut 7 strips 2 ½" x WOF

Q4449 September

Cut nine 3 ½" x WOF strips

Sub-cut 52 rectangles 3 ½" x 6 ½" (A)

Q4464 Amazon

Cut 8 strips 3 ½" x WOF

1895 Gardenia

Cut twenty-seven 3 ½" x WOF strips

Sub-cut 48 rectangles 3 ½" x 6 ½" (A)

Sub-cut 208 squares 3 ½" x 3 ½" (B)

Cut three 3 7/8" x WOF strips

Sub-cut 24 squares 3 7/8" x 3 7/8" (C)

Cut two 6 ½" x WOF strips

Sub-cut 12 squares 6 ½" x 6 ½"(D)

1895 Plum

Cut three 3 ½" x WOF strips

Sub-cut 24 squares 3 ½" x 3 ½" (B)

Cut two 3 7/8" x WOF strips

Sub-cut 12 squares 3 7/8" x 3 7/8" (C)

Cut eight 1 ½" x WOF strips

1895 Paisley

Cut three 3 ½" x WOF strips

Sub-cut 24 squares 3 ½" x 3 ½"(B)

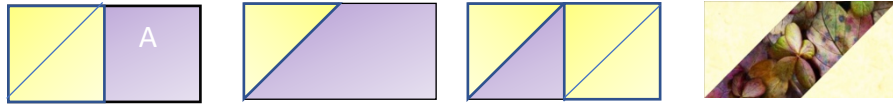
Cut two 3 7/8" x WOF strips

Sub-cut 12 squares 3 7/8" x 3 7/8" (C)

Cut 8 strips 2 ½" x WOF

Making the Blocks:

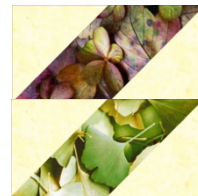
1. Align a Gardenia B square on one corner of a September A rectangle. Noting orientation, mark a diagonal line from corner to corner on C and sew on the marked line. Trim $\frac{1}{4}$ " beyond the sewn line, open the patch and press. Again, noting orientation, repeat with a Gardenia B square on the other side. Repeat to make 52.



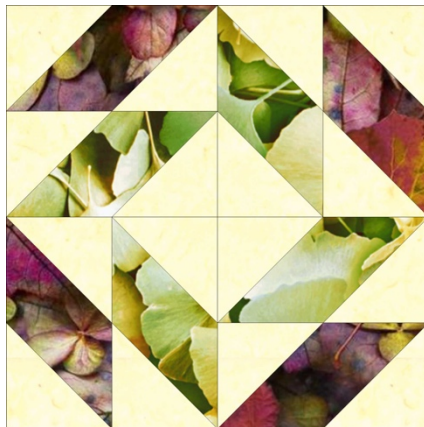
2. Repeat step 1 using Lime A rectangles and Gardenia B squares to make 52 of these units.



3. Sew the two units together to make a quarter block. Make 52 quarter blocks.



4. Sew four quarter blocks together to make a block. Repeat to make 13 blocks.



Make 13

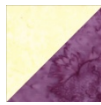
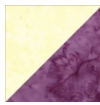
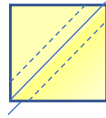
5. Align a Plum B square on a Gardenia A rectangle. Mark a diagonal line on B and sew on the marked line. Trim $\frac{1}{4}$ " beyond the sewn line, open the patch and press. Repeat to make 24 Gardenia/Plum units.



6. Repeat step 5 to make 24 Gardenia/Paisley units.



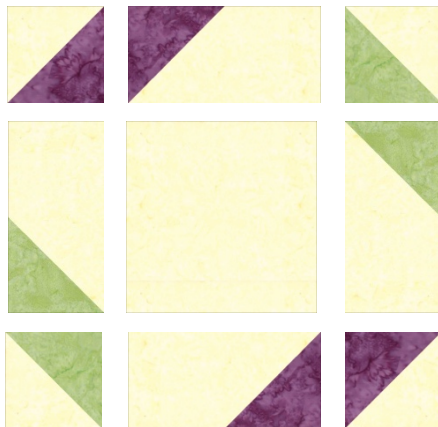
7. Draw a diagonal line from corner to corner on the wrong side of the Gardenia C squares. Layer a Gardenia C square and Plum C square right sides together. Sew $\frac{1}{4}$ " away from each side of the drawn line. Cut on the drawn line. Open and press toward the Plum to make 2 half-square triangles. Repeat to make a total of 24 Gardenia/Plum half-square triangles and 24 Gardenia/Paisley half-square triangles.



Make 24

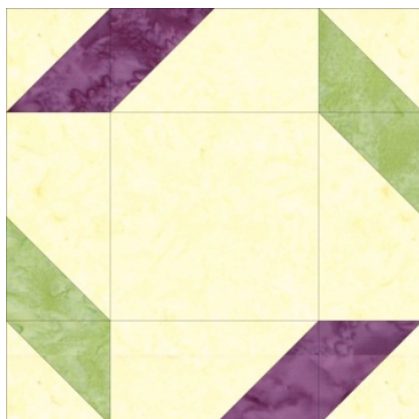
Make 24

8. Sew two each Gardenia/Plum half-square triangles, Gardenia/Paisley half-square triangles, Gardenia/Plum units, Gardenia/Paisley units and 1 Gardenia D square together to make a block. Make 12 blocks.



Make 12

9. Arrange the blocks in five rows of five blocks each as shown. Sew the blocks together into rows. Sew the rows together. See the attached layout diagram.



10. Sew the Lime strips together end to end for border #1. Measure the quilt top from top to bottom and cut 2 lengths equal to this measurement. Sew these strips to the sides of the quilt top. Measure the quilt top from side to side and cut 2 lengths equal to this measurement. Sew one strip to the top and one strip to the bottom of the quilt top. Repeat these steps to measure, trim and sew the plum border #2 strips and the Amazon border #3 strips.
11. Layer and baste together the backing, batting and quilt top. Quilt as desired.
12. Bind with the Paisley.